

Anodi per motori MERCURY/MARINER/MERCURISER

Anodo piede fuoribordo 50/75 HP



Anche Mariner stesse potenze.

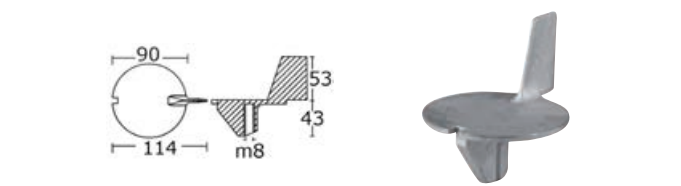
Codice	Riferimento originale
43.172.64	17264

Pinna fuoribordo 18/25 HP



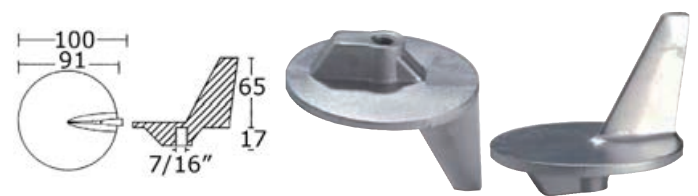
Codice	Riferimento originale
43.426.00	94286

Anodo per motori 9,9/25 HP, Force 25, Yamaha 4T 50 HP



Codice	Riferimento originale
43.426.10	984325

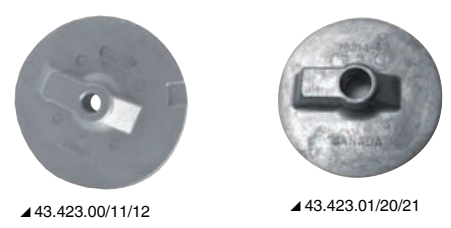
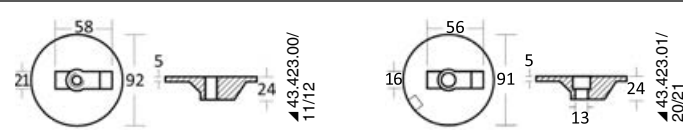
Anodo per piedi con eliche in acciaio inox 50/140 HP



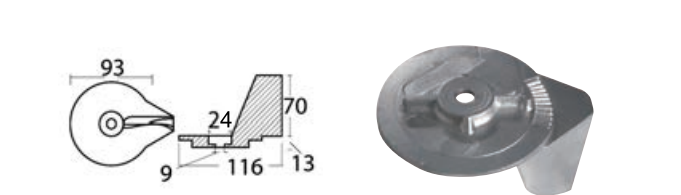
Codice	Riferimento originale
43.426.20	46399

Pinna piatta per Alpha/Bravo/Verado

Zinco	Alluminio	Magnesio	Descrizione	Riferimento originale
43.423.00	43.423.11	43.423.12	Pinna piatta Alpha/Bravo 35/300 HP	806105
43.423.01	43.423.20	43.423.21	Pinna piatta Bravo	762144

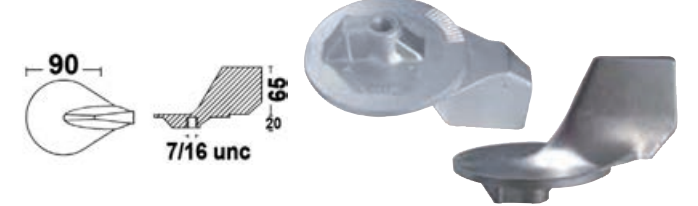


Pinna 25/50 HP, 2 e 4 tempi



Zinco	Alluminio	Magnesio	Riferimento originale
43.822.15	43.822.16	43.822.17	822157-C2

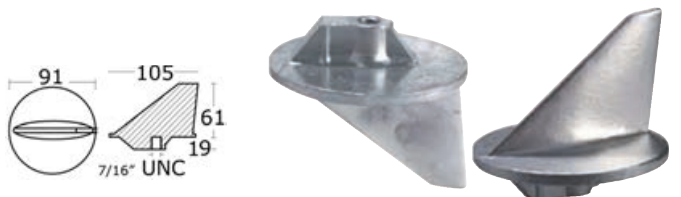
Pinna 35/225 HP



Pinna 35/225 HP fuoribordo e gruppi poppieri dal 1995 in poi.

Codice	Riferimento originale
43.227.77	822777

Pinna



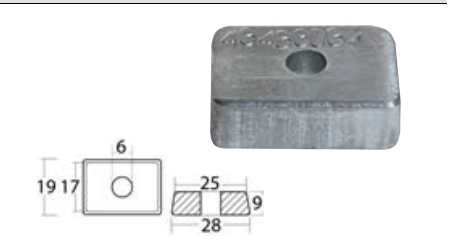
Zinco	Alluminio	Magnesio	Pinna	Riferimento originale
43.420.00	43.420.10	43.420.11	Pinna F.B. 2 e 4 tempi dal 40 al 225 HP, filetto 7/16"	31640

Pinna



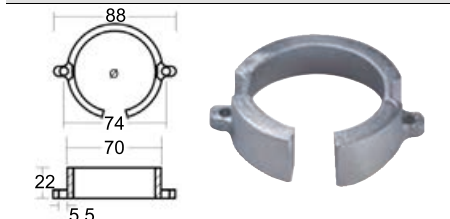
Zinco	Pinna	Riferimento originale
43.425.00	Pinna F.B. per gruppi poppieri	34127

Anodo per Mercury 4/5/6 HP



Zinco	Alluminio	Riferimento originale
43.433.03	43.433.04	875208

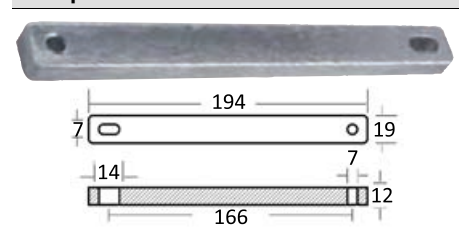
Anodo supporto asse elica



Anodo supporto asse elica Mercuriser Bravo I.

Zinco	Alluminio	Magnesio	Riferimento originale
43.806.18	43.806.19	43.806.20	806188A

Trim fuori bordo 25/30/40 HP, 2 e 4 tempi



Codice	Riferimento originale
43.252.71	825271

TECNOSSEAL