

Barra entrobordo (zinco)



Zinco	Riferimento originale
43.254.70	6U4-45251-00

Barra per Yamaha e Mariner 25/100 HP



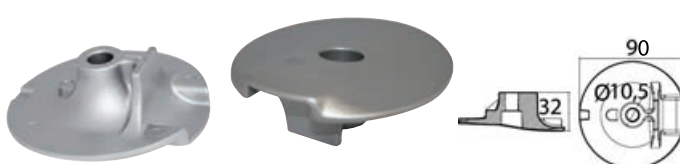
Zinco	Alluminio	Magnesio	Riferimento originale
43.254.10	43.254.11	43.254.12	6H1-4525103

Piastra entrofuoribordo (zinco)



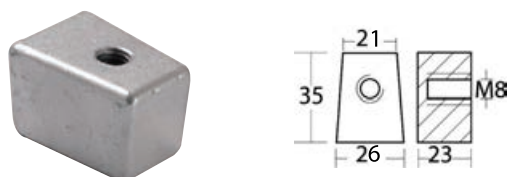
Zinco	Riferimento originale
43.254.50	6UO-45251-00

Piastra motore 200/350 HP



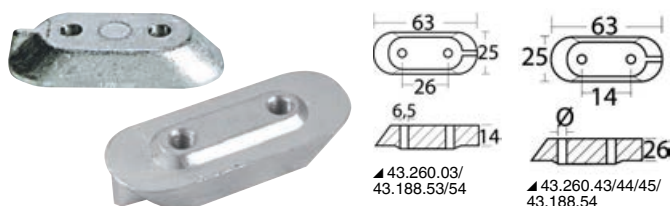
Zinco	Alluminio	Magnesio	Riferimento originale
43.258.50	43.258.51	43.258.52	6AW-45619-00

Anodo piede



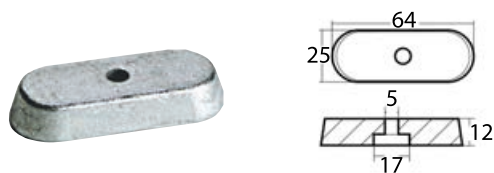
Zinco	Alluminio	Magnesio	Riferimento originale
43.260.02	43.260.50	43.260.51	67C-45251-00 / 63D-45251-10

Anodo cavalletto per Yamaha 4/70 HP 4 tempi



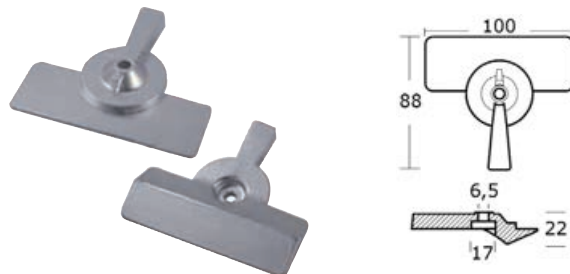
Zinco (ex 43.188.52)	Alluminio	Magnesio	Ø fori mm	Filetto	Riferimento originale
43.260.03	43.188.53	43.188.54	6,5	-	65W-45251-00/6EO-4525112
43.260.43	43.260.44	43.260.45	-	M5	65W-45251-00/6EO-4525112

Anodo piede per motori Yamaha 6/8/9,9 HP 4 tempi



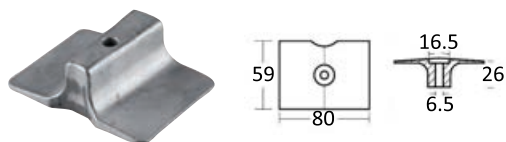
Zinco	Alluminio	Riferimento originale
43.260.04	43.260.24	68T-45251-00

Anodo 9,9 HP



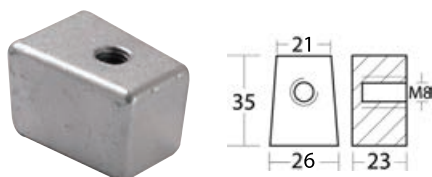
Codice	Riferimento originale
43.266.00	6G8-4525101

Anodo 9,9 / 15 HP - 2T



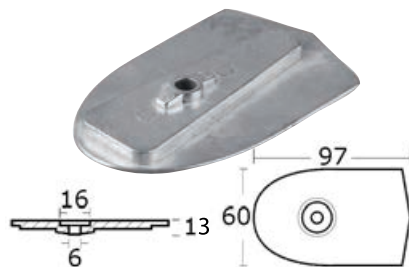
Zinco	Alluminio	Magnesio	Riferimento originale
43.267.00	43.267.01	43.267.02	61N-4525101

Anodo 40/50 HP



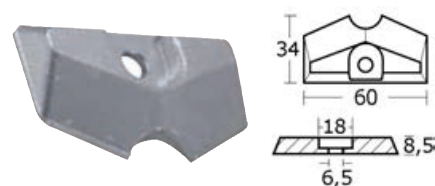
Codice	Riferimento originale
43.260.02	63D-4525110

Piastrina per 6C/6D/8C



Codice	Riferimento originale
43.259.01	6G1-45251-03-6N0-65251-00

Piastrina per 2B/3A/4B/F4A/5C



Codice	Riferimento originale
43.259.03	6L5-4525103 • 68D-G5251-00