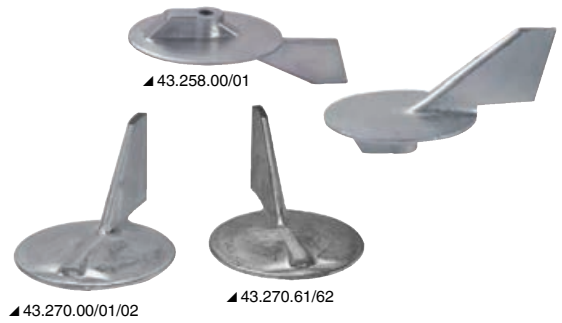
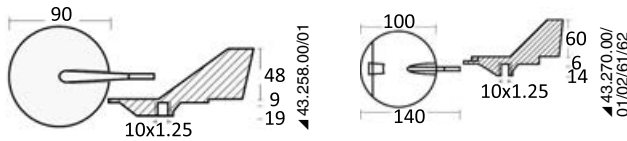


**Pinna Yamaha/Mariner**

Zinco	Alluminio	Magnesio	Descrizione	Ø mm	Riferimento originale
43.258.00	43.258.01	-	Pinna 50/90 HP	90	688-45371-02
43.270.61	43.270.62	43.270.63	Pinna 100/220 HP controrotanti piega sx	100	6K1-4537102
43.270.00	43.270.01	43.270.02	Pinna 100/220 HP piega dx	100	6J9-4537101



**Pinna piega dx/sx**

Zinco	Alluminio	Descrizione	Ø mm	Riferimento originale
43.253.00	43.253.10	Pinna 90/200 HP e oltre, piega dx	92	6E5-45371-01
43.253.01	-	Pinna 100/200 HP controrotante piega sx	92	6K1-4537100

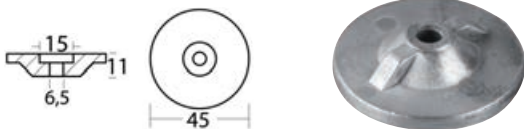


**Rondella**

Zinco	Alluminio	Magnesio	Ø mm	Rif. originale
43.260.00	43.259.99	43.259.98	24x7	677-4525100
43.823.91	43.823.92	43.823.93	20x7	676-4525100
43.239.13	43.239.14	43.239.15	24x6,5	-
43.260.01	43.260.31	43.260.32	24x15	688-45251-01

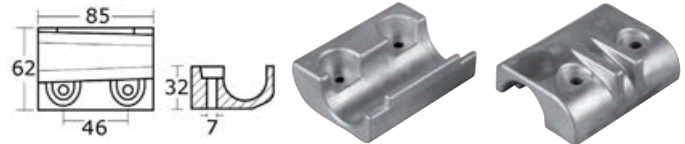


**Rondella 9,9/15 HP**



Codice	Ø mm	Riferimento originale
43.262.00	45	6E8-4525100

**Anodo fuori bordo 40/50 HP 4 tempi**



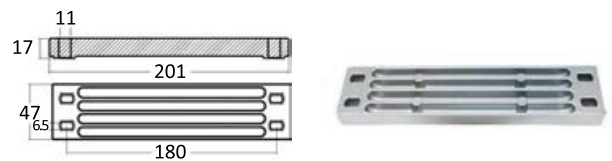
Codice	Riferimento originale
43.264.00	63D-4525100

**Pinna per Yamaha 150/225 HP 2/4 tempi**



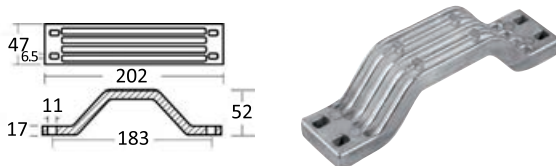
Codice	Ø mm	Riferimento originale
43.252.80	100	6J9-45371-00

**Barra cavalletto**



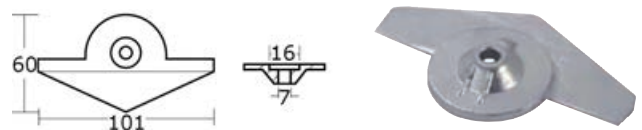
Zinco	Alluminio	Magnesio	Riferimento originale
43.254.04	43.254.05	43.254.06	6AW-4525-1

**Anodo 100/300 HP**



Zinco	Alluminio	Magnesio	Riferimento originale
43.254.00	43.254.01	43.254.02	6G5-45251-01/02

**Anodo fuori bordo**



Anodo fuori bordo F8A/B 9,9D/F9,9B/15D

Zinco	Riferimento originale
43.263.00	6E8-45251-02

**Anodo motore entro fuoribordo con tappo (zinco)**

Zinco	Riferimento originale
43.254.80	N51-11325-01

